

Words to describe art

Anne Roy - CPD LV 41

Color

Français	Anglais
Naturel, clair, compatible, distinctif, vivant, stimulant, subtil, sympathique.	Natural, clear, compatible, distinctive, lively, stimulating, subtle, sympathetic
Artificiel, heurté, déprimant, discordant, criard, criard, discordant, inamical, violent	Artificial, clashing, depressing, discordant, garish, gaudy, jarring, unfriendly, violent
Brillant, brillant, profond, terreux, harmonieux, intense, riche, saturé, fort, vibrant, vif.	Bright, brilliant, deep, earthy, harmonious, intense, rich, saturated, strong, vibrant, vivid
Terne, plat, insipide, pâle, moelleux, sourd, discret, calme, faible.	Dull, flat, insipid, pale, mellow, muted, subdued, quiet, weak
Mélangé, brisé, mélangé, embrouillé, brouillé, pur	Blended, broken, mixed, muddled, muddied, pure
Complémentaire, contrastant, harmonieux	Complementary, contrasting, harmonious
Frais, froid, tiède, chaud, clair, sombre	Cool, cold, warm, hot, light, dark

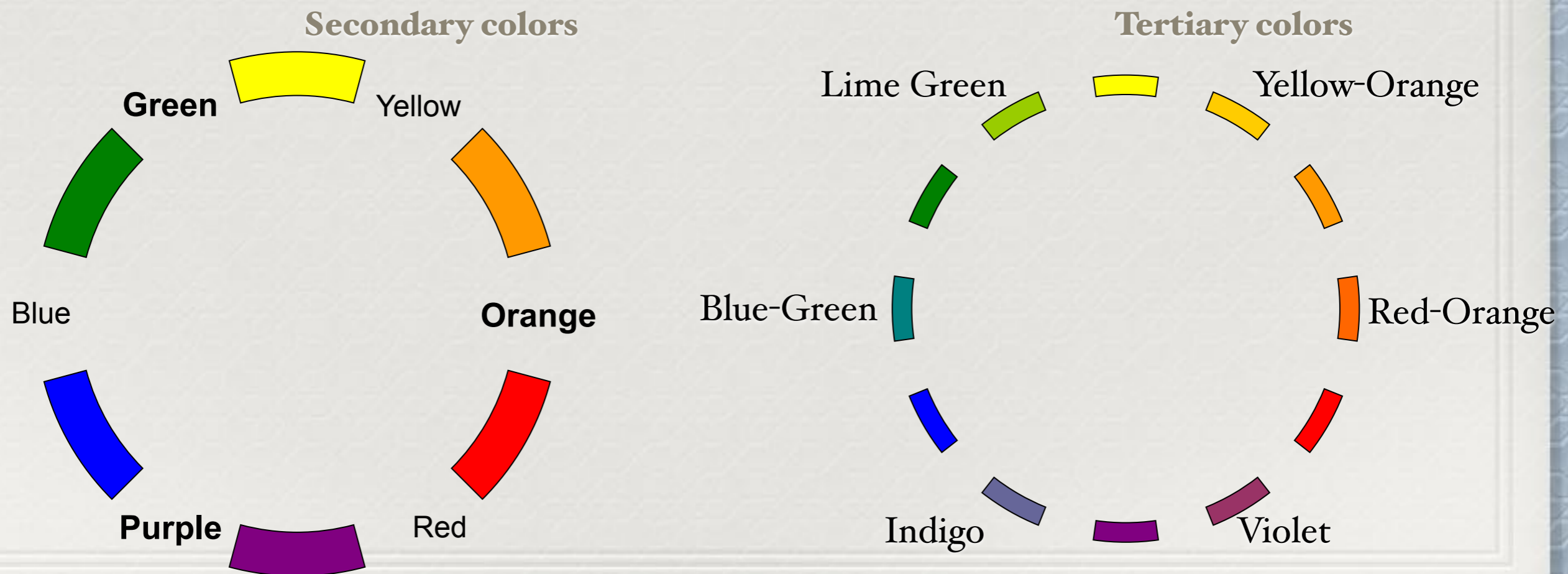
Color

Primary Colors

- are the only colors that cannot be made by mixing two other colors together.
- are the foundation of the color wheel.

YELLOW, **RED**, and **BLUE**.

Cool colors : blues, greens and purples / warm colors : reds, oranges, yellows



Tone / value of colors

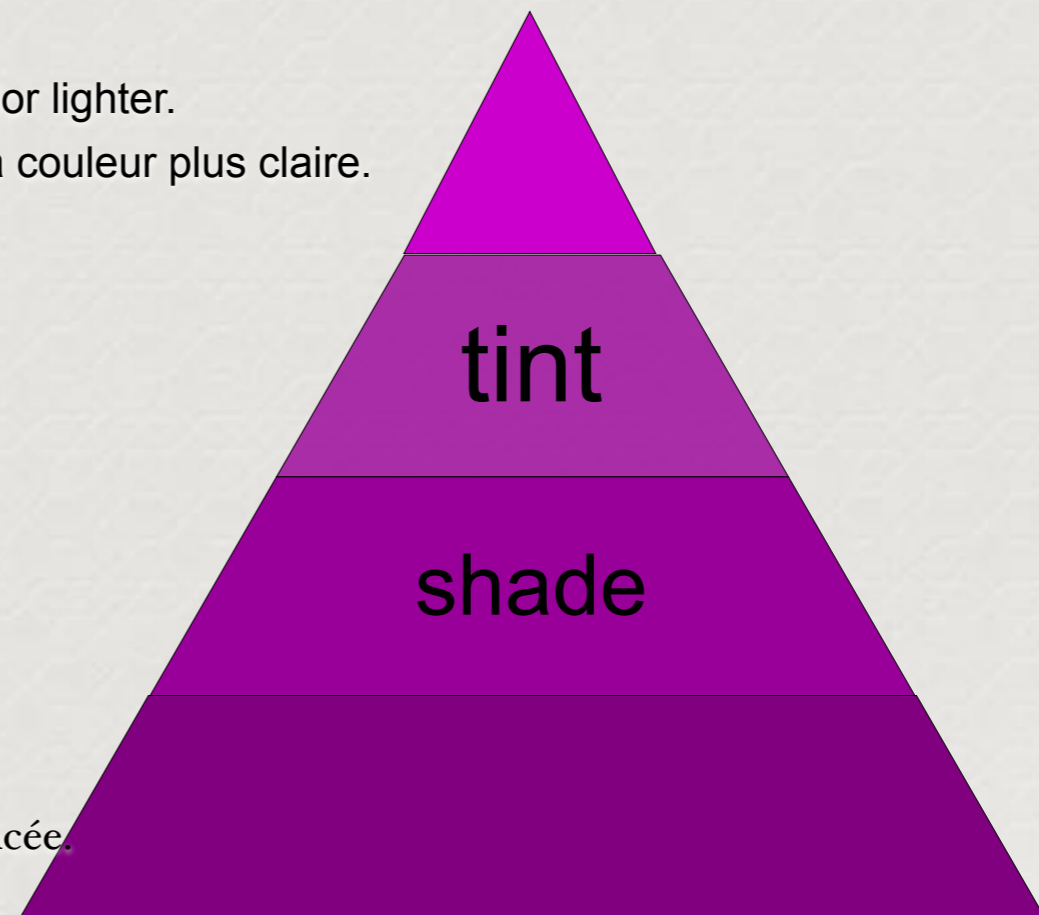
Français	Anglais
Foncé, clair, moyen (intermédiaire)	Dark, light, mid (middle)
Plat, uniforme, invariable, lisse, uni	Flat, uniform, unvarying, smooth, plain
Varié, brisé	Varied, broken
Constant, changeant	Constant, changing
Gradué, contrasté	Graduated, contrasting
Monochromatique (si un artiste choisit d'utiliser toutes les nuances d'une couleur, du plus foncé au plus clair), polychromatique (si l'artiste choisit une variété de teintes).	Monochromatic (If an artist chooses to use all shades of one color from dark to light), polychromatic (If the artist chooses a variety of hues).

Tone / value of colors

refers to the hue's brightness or darkness

Tint means to add white to make the color lighter.

La teinte consiste à ajouter du blanc pour rendre la couleur plus claire.



Shade means to add black to make the color darker.

Nuancer signifie ajouter du noir pour rendre la couleur plus foncée.

Composition

Français	Anglais
Arrangement, disposition, structure, position	Arrangement, layout, structure, position
Format paysage, format portrait, format carré, circulaire, triangulaire	Landscape format, portrait format, square format, circular, triangular
Horizontal, vertical, diagonal, angulaire	Horizontal, vertical, diagonal, angled
Premier plan, arrière-plan, milieu de plan	Foreground, background, middle ground
Centré, asymétrique, symétrique, équilibré, déséquilibré, désaxé, décentré.	Centered, asymmetrical, symmetrical, balanced, unbalanced, lopsided, off-center
Chevauchement, encombré, chaotique	Overlapping, cluttered, chaotic
Séparé, spacieux, vide	Separate, spacious, empty
Libre, fluide, fragmenté	Free, flowing, fragmented
Formel, rigide, vertical, confiné	Formal, rigid, upright, confined
Espace négatif, espace positif	Negative space, positive space

Composition

Refers to structure or the manner the artist uses or arranges elements of the work in an area, and how these components relate to each other.

o

Positive and Negative

Positive space takes up space, negative space is empty. The positive is the material, the negative is the absence of material.

o

Open and Closed

In a painting, if the viewer's eyes are led off the canvas, the space is open, or the painting has an open frame. If the viewer's eyes are kept in the center of the canvas and all the characters and action are within the edges of the frame, the artist has composed a closed space or closed frame.

Composition

Positive and Negative...

All positive space, no negative space, no room between them.



Brancusi, *The Kiss*, 1917

Lots of negative space employed to create tension, dynamic embrace.



Canova, 19th Century, NeoClassical (Reproduction)

http://www.talariaenterprises.com/product_lists/romance.html

Composition

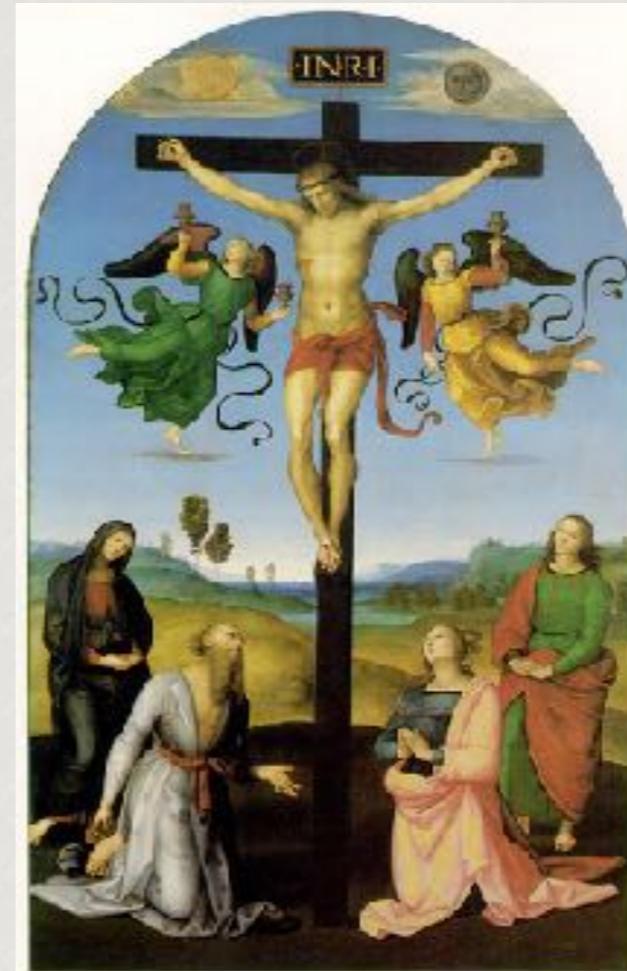
Open and closed space



Grunewald
The Mocking of Christ
1503

Grunewald's piece exhibits an open frame, the action leads the eyes all over the canvas and off the edges of the frame.

Raphael's piece exhibits a closed frame, the action is centered and the viewer is focused on the main action.



Raphael Crucifixion with Sts
Mary Virgin, Mary Magdalen,
John and Jerome
c. 1503

Texture

Français	Anglais
Plat, poli, lisse	Flat, polished, smooth
Élevé, rugueux, grossier	Raised, rough, coarse
Coupé, incisé, piqué, rayé, irrégulier	Cut, incised, pitted, scratched, uneven
Poilu, collant	Hairy, sticky
Mou, dur	Soft, hard
Brillant, brillant, réfléchissant	Shiny, glossy, reflective
Semi-brillant, satiné, soyeux, givré, mat	Semigloss, satin, silk, frosted, matte

Mark making

details of the brushwork

Français	Anglais
Visible, empâté, mélangé, lisse	Visible, impasto, blended, smooth
Épais, fin	Thick, thin
Audacieux, timide	Bold, timid
Lourd, léger	Heavy, light
Énergique, lisse	Edgy, smooth
Exposition de glacis, de lavis, de brouillards, de brossages à sec, de pointillés, de hachures,	Exhibiting glazes, washes, scumbling, dry brushing, stippling, hatching, splatters
Superposé, plat	Layered, flat
Précis, raffiné, régulier, droit, systématique	Precise, refined, regular, straight, systematic
Rapide, sommaire, inégal, irrégulier, vigoureux	Quick, sketchy, uneven, irregular, vigorous
Régulier, à motifs	Regular, patterned
Exposer des marques faites avec un couteau, un pinceau	Exhibiting marks made with a knife, brush

Mood or atmosphere

What emotions do you experience looking at it?

Français	Anglais
Calme, content, paisible, détendu, tranquille	Calm, content, peaceful, relaxed, tranquil
gai, heureux, joyeux, romantique	Cheerful, happy, joyful, romantic
Déprimé, morose, misérable, triste, sombre, larmoyant, malheureux	Depressed, gloomy, miserable, sad, somber, tearful, unhappy
Agressif, colérique, glacial, sombre, angoissant, effrayant, violent	Aggressive, angry, chilling, dark, distressing, frightening, violent
Énergique, excitant, stimulant, qui donne à réfléchir.	Energetic, exciting, stimulating, thought-provoking
Ennuyeux, terne, sans vie, insipide.	Boring, dull, lifeless, insipid

Form and shape

What sense of depth and volume is there?

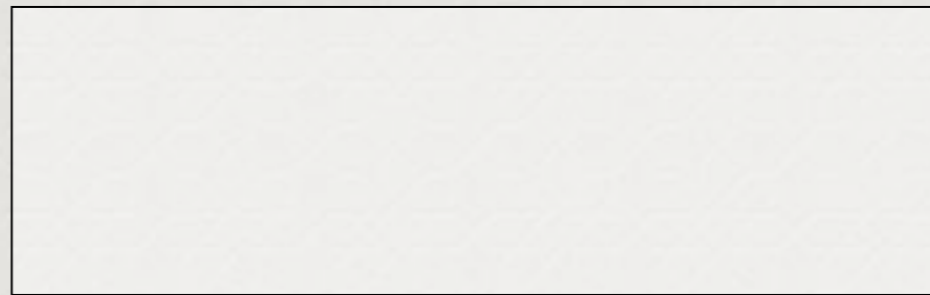
Français	Anglais
2-D, plat, abstrait, simplifié, stylisé	2-D, flat, abstracted, simplified, stylized
3-D, réaliste, sens naturel de la profondeur et de l'espace	3-D, realistic, natural sense of depth and space
Netteté, détails	Sharp, detailed
Flou, obscurci, superposé, indistinct	Blurred, obscured, overlapping, indistinct
Déformé, exagéré, géométrique	Distorted, exaggerated, geometric
Linéaire, long, étroit	Linear, long, narrow
Arête dure, arête douce	Hard-edged, soft-edged

Form and shape

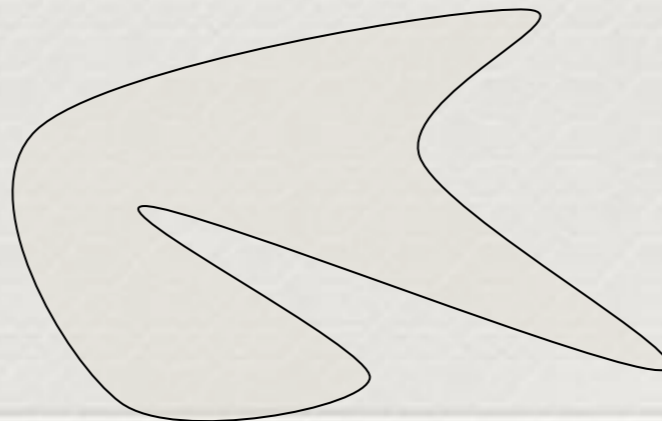
What sense of depth and volume is there?

Organic and Geometric

Organic shapes are natural shapes which can be symmetrical and asymmetrical.



Geometric shapes are 'man-made' or machine made shapes, mathematically deduced, with clear sharp edges.



Viewpoint and pose

How has the artist decided to present it? What is the perspective?

Français	Anglais
De face, de côté, de trois quarts, de profil, de dos (de derrière).	Front, side, three-quarters, profile, rear (from behind)
De près, de loin, grandeur nature, vue d'oiseau	Close up, far away, life-size, bird's eye view
Vers le haut, vers le bas, de côté	Upward, downward, sideways
Debout, assis, couché, penché	Standing, sitting, lying down, bending
Gestuelle, en mouvement, au repos, statique	Gesturing, moving, resting, static

Still life

Français

Antique, abîmé, endommagé, poussiéreux, vieux,
usé...

Neuf, propre, brillant

Fonctionnel, décoratif, fantaisiste

Domestique, humble

Commercial, industriel

Anglais

Antique, battered, damaged, dusty, old, worn

New, clean, shiny

Functional, decorative, fancy

Domestic, humble

Commercial, industrial

Style

Français	Anglais
Réalisme, photoréalisme	Realism, photorealism
Cubisme, surréalisme	Cubism, surrealism
Impressionnisme	Impressionism
Modernisme, expressionnisme	Modernism, expressionism
Style chinois, japonais ou indien	Chinese, Japanese, or Indian style
Plein air	Plein air

Media

Français	Anglais
Huile, détrempe	Oil, tempera
Acrylique	Acrylics
Pastel, craie, charbon de bois	Pastel, chalk, charcoal
Techniques mixtes, collage	Mixed media, collage
Aquarelle, gouache	Watercolor, gouache
Encre	Ink
Fresque	Fresco
Peinture en aérosol	Spray paint
Panneaux de bois, toile, verre	Wood panels, canvas, glass

Size

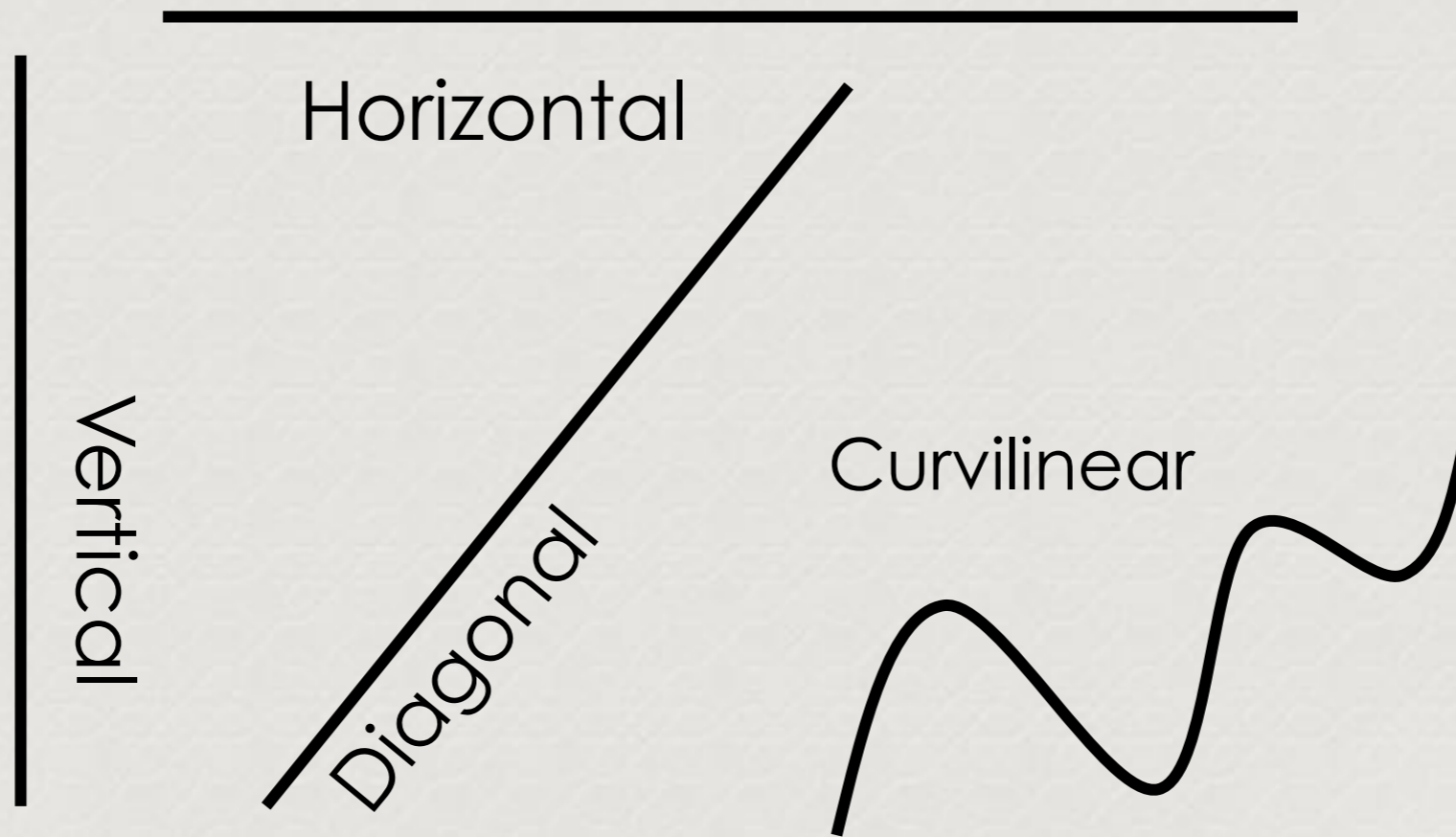
Français	Anglais
Mural	Mural
Miniature	Miniature
Triptyque	Triptych

Perspective

Français	Anglais
aérien	aerial
atmosphérique	atmospheric
linéaire ou à un point	linear or one-point
perspective à deux points pour une ligne d'horizon.	two-point perspective for a horizon line.

Line

Four Basic Types of Lines



Line

Français	Anglais
La ligne implicite est la ligne à l'intérieur de l'objet dans l'œuvre d'art.	Implied Line is the line inside the object within in the art work.
ligne verticale - implique la noblesse	vertical line - implies nobility
ligne horizontale - implique le calme ou le repos	horizontal line - implies calm or rest
ligne diagonale - implique le mouvement	diagonal line - implies movement
ligne curviligne - implique la grâce	curvilinear line- implies grace

Pour une liste complète de vocabulaire et
de phrases, suivez ce lien:

<https://www.words-to-use.com/words/art/>